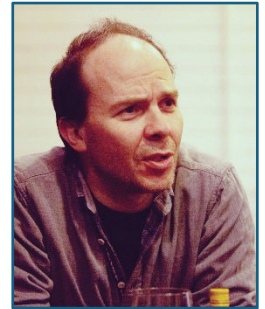


Participant Bios

Alastair Broom is founder and CEO of Spinning Around, a Scottish space technology company developing affordable, tailor-made gravity environments for life science research in orbit. A software engineer and entrepreneur with more than 30 years of experience in technology and business leadership, he is focused on expanding access to space-based experimentation for researchers and innovators in biotechnology, pharmaceuticals and regenerative medicine.



Dr Becky Ball is Special Projects Delivery Manager at Space Scotland, the national body representing Scotland's space sector. She leads strategic initiatives in areas including in-orbit servicing, assembly and manufacturing (ISAM), cross-sector collaboration with life sciences and AI, and programmes designed to help companies enter the space sector. Becky graduated from Duke University with a degree in Mathematics and has been active in space policy, education and sector development both in the UK and internationally.



Prof Charles Cockell is a leading astrobiologist and Director of the UK Centre for Astrobiology at the University of Edinburgh. His research explores life in extreme environments, the habitability of other worlds, and the role of microorganisms in space exploration. He has led pioneering experiments on the International Space Station, including BioRock and BioAsteroid, which demonstrated biological mining in space, and has authored numerous scientific and popular science publications on astrobiology and the future of human activity beyond Earth.



Charlie Young is founder of Plastron Ltd and an advocate for skills development, safety and innovation across the UK space sector. Trained as a mechanical engineer, he has experience spanning spacecraft propulsion, launch systems engineering and launch campaign management, alongside more than two decades in technology and service design. Through Plastron and his wider industry engagement, he works to strengthen workforce capability, productivity and commercial growth across the emerging space economy.

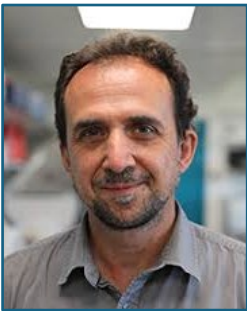


Dr Christina (CJ) Johnson is Chief of the Space Biosciences Research Branch at NASA Ames Research Center. She leads research programmes that investigate how living systems respond and adapt to the space environment, supporting future human exploration missions beyond low Earth orbit. In addition to her leadership role at NASA Ames, she serves as Deputy Center Lead for NASA's Human Research Program and Course Director for NASA's Spaceflight Technology, Applications, and Research (STAR) training programme.





Dr Cinzia Klemm is a Research Associate in the RLA Lab at Imperial College London. With a background in functional genomics and cell biology, her research focuses on understanding metabolic heterogeneity in microbial populations and the relationship between cell cycle regulation and cellular function. Her work combines synthetic biology, systems biology and biotechnology approaches to improve microbial production systems and advance our understanding of cellular behaviour.



Dr Daniel Muñoz-Espin is a Group Leader in the Early Cancer Institute and Department of Oncology at the University of Cambridge, where he investigates the role of cellular senescence in ageing, regeneration and cancer. His research has helped redefine senescence as a dynamic biological process involved in tissue remodelling and repair, and he develops innovative approaches for the detection and therapeutic targeting of senescent cells.



Elliott Jeffery is Deputy Head of Space Exploration at the UK Space Agency. He leads activities that strengthen the UK's role in international space exploration through national programmes and bilateral partnerships with agencies and organisations around the world. His work supports the development of scientific, technological and commercial opportunities arising from human and robotic exploration missions, helping to connect UK researchers, industry and government.

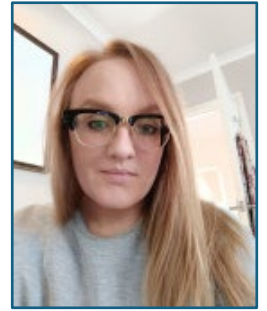


Dr Gilles Bailet is a Lecturer in Space Technology at the University of Glasgow, where he leads research on innovative technologies for future space missions, including in-space manufacturing, sustainable space systems and planetary exploration. His work focuses on developing manufacturing approaches and mission-enabling hardware for operation in space environments, with particular interests in space sustainability and resource-efficient exploration.



Dr Ghada Alsaleh is an Associate Professor at the University of Oxford and founder of the Space Innovation Lab. Her research focuses on the biology of ageing, autophagy and immunosenescence, with particular interest in how cellular recycling pathways influence age-related disease and tissue degeneration. By combining translational ageing research with space biology, her group uses microgravity as a platform to investigate mechanisms of ageing and identify interventions that could improve human health on Earth and future space exploration.

Dr Karen Donaldson is an Elizabeth Georgeson Fellow in the School of Engineering at the University of Edinburgh. Her research combines bioinspired engineering, robotics and planetary exploration technologies, with a particular focus on biomimetic systems for challenging environments. With a background in physics, space engineering and robotics, she has contributed to the development of innovative sensing and robotic technologies for future exploration missions and is recognised for her interdisciplinary approach to solving complex engineering challenges.



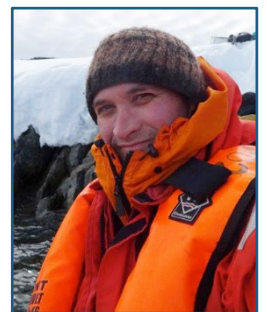
Dr Katherine Baxter is a Research Associate in the School of Molecular Biosciences at the University of Glasgow. Her research spans microbiology, biofilms, host-microbe interactions and space life sciences, with a particular interest in understanding how microbial communities function under altered gravity conditions. She is Coordinator of the UK Space Life and Biomedical Sciences Association (UK Space LABS) and an active member of international space biology communities, helping to advance collaborative research on microbiomes and biofilms in spaceflight environments.



Mason Robbins is founder and CEO of Star Helix, a biotechnology company developing advanced life science capabilities for space-based research and manufacturing. His work focuses on enabling biological experimentation and bioproduction in microgravity, helping bridge the gap between academic research, commercial biotechnology and the growing space economy. Through Star Helix, he advocates for greater access to space as a platform for innovation in health, biotechnology and regenerative medicine.



Dr Matt Davey is an Associate Professor of Physiological Ecology at the Scottish Association for Marine Science (SAMS). His research focuses on the physiology, ecology and biotechnology of algae and other photosynthetic organisms, with particular interest in how they adapt to extreme and changing environments. By combining fundamental biological research with applied biotechnology, his work supports the development of sustainable bio-based solutions and advances our understanding of biological resilience under environmental stress.



Michaela Walsh is a PhD researcher at University College Dublin, working jointly with UCD and St. Luke's Hospital. Her research focuses on the RadioBiome project, which investigates how the gut microbiome responds and adapts to radiation exposure. Through this work, she explores mechanisms of biological resilience that are relevant to human health in challenging environments, including potential applications in space life sciences and long-duration exploration missions.





Dr Natasha Nicholson is Business Development Manager at Space Scotland, where she supports the growth of Scotland's space sector through industry engagement, strategic partnerships and cross-sector collaboration. She works closely with companies, researchers and public-sector stakeholders to strengthen innovation, develop new opportunities and promote Scotland's capabilities across the national and international space ecosystem.



Dr Nicholas Brereton is an Assistant Professor at University College Dublin whose research focuses on microbiome science, microbial ecology and host–microbe interactions. His work combines molecular biology, genomics and systems approaches to understand how microbial communities influence health, disease and environmental adaptation. He has particular interests in the role of the microbiome in resilience to stressors, with applications spanning human health, agriculture and space life sciences.



Dr Phil Carvil is Head of Clusters at the Science and Technology Facilities Council (STFC), where he leads initiatives that connect academia, industry and government to accelerate innovation across strategic sectors, including space and life sciences. His PhD focused on the SkinSuit countermeasure for mitigating the physiological effects of microgravity. He is a longstanding advocate for space-enabled health and biomedical research, having coordinated the UK Space Life and Biomedical Sciences Association, and served as President of the European Low Gravity Research Association (ELGRA).



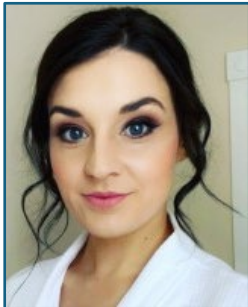
Ramon Nartallo is Commercial Director at Kayser Space Ltd, where he supports the development and delivery of spaceflight research missions for academic, institutional and commercial customers. With extensive experience in the space sector, he works at the interface of science, engineering and business development, helping researchers access microgravity platforms and flight opportunities. His work contributes to advancing life and physical sciences research in space through collaborations with international partners and space agencies.



Dr Raúl Herranz Barranco is a Research Scientist at the Spanish National Research Council (CSIC), where he investigates the effects of the space environment on biological systems. His research focuses on gravitational biology, radiation biology and microbial responses to spaceflight, contributing to our understanding of how life adapts to conditions beyond Earth. He has participated in numerous national and international space biology projects, including experiments conducted on the International Space Station and other microgravity platforms.



Dr Rodrigo Coutinho de Almeida leads ESA's Space Omics and Health activities, supporting research into the molecular and physiological effects of spaceflight on living systems. With a background spanning molecular biology, omics technologies and translational biomedical research, he works to advance the use of genomics, transcriptomics and other systems biology approaches in human and biological spaceflight research. His work helps shape ESA's strategy in space life sciences and supports the development of countermeasures to maintain health during future exploration missions.



Dr Sam Healy-Jones is a researcher at the University of Liverpool working at the intersection of ageing biology, muscle physiology and space life sciences. Her research uses microgravity and spaceflight-inspired models to investigate the mechanisms underlying muscle decline and adaptation, with the goal of developing strategies to improve healthy ageing and resilience. She has contributed to collaborative projects examining the parallels between ageing on Earth and physiological changes experienced during spaceflight



Professor Simon Evetts is a leading figure in space biomedicine and human spaceflight research. Following a career supporting astronaut health at the European Astronaut Centre, he has played a pivotal role in developing the UK's space life sciences community. He co-founded the UK Space Life and Biomedical Sciences Association (UK Space LABS) and has led numerous initiatives focused on astronaut health, rehabilitation and human performance in extreme environments. He is a Visiting Professor at Northumbria University and continues to support the growth of human spaceflight and biomedical research in the UK



Dr Sofia Ferreira-Gonzalez is a Principal Investigator in Regenerative Biology at the University of Edinburgh. Her research focuses on understanding the cellular and molecular mechanisms that govern ageing, regeneration and tissue repair, with a particular emphasis on cellular senescence. Using non-conventional regenerative animal models, including the African spiny mouse (*Acomys*), her work aims to uncover endogenous mechanisms of tissue rejuvenation and regeneration that could inform new therapeutic strategies for age-related diseases and organ repair.



Suresh Kumar is Deputy Director for Innovation and Industrial Transformation within the Scottish Government. His work focuses on supporting innovation-led economic growth, industrial transformation and the development of strategic partnerships across academia, industry and government. With a background spanning research, higher education and science administration, he works to strengthen Scotland's research and innovation ecosystem and foster collaboration in emerging technology sectors.



Dr Varsha Jain is a clinician and researcher in obstetrics and gynaecology at the University of Edinburgh, specialising in women's health. Her work has focused on "space gynaecology," investigating how spaceflight affects female physiology, including menstrual health, reproduction, and risks such as thrombosis and hormonal regulation. She has worked with NASA and ESA on astronaut health research and helps translate insights from extreme environments into improved understanding of women's health on Earth, particularly in conditions such as abnormal uterine bleeding and reproductive health disorders.



Dr William Da Silveira is a Lecturer in Medical Genomics at the University of Salford. His research focuses on genomics, space biology, ageing and cancer, using omics and bioinformatics approaches to understand how biological systems respond to environmental stressors, including spaceflight conditions. He has held research positions in Brazil, the United States, France and the UK, and has collaborated with NASA GeneLab on space biology datasets. His work bridges medical genomics and space life sciences, with applications for human health in extreme environments.